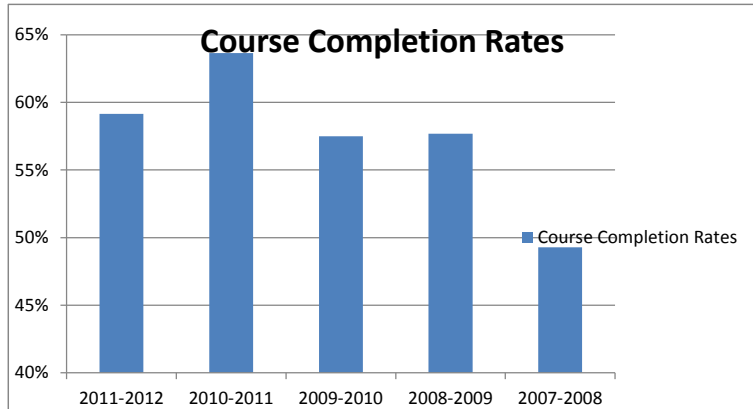


### Appendix B: Course Completion Rates - ABE 2007-2012

Year	Completion Rate	# Completions/#Registrations
2011-2012	59%	42/71
2010-2011	64%	35/55
2009-2010	58%	46/80
2008-2009	58%	45/78
2007-2008	49%	35/71

# Completions/#Registrations

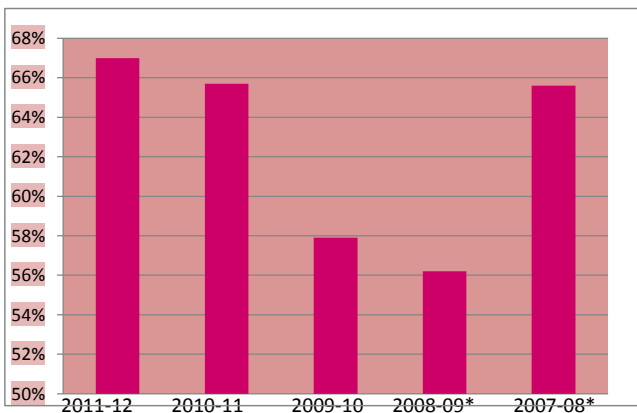
These rates were constructed using leaver forms. The total number of courses completed was divided by the total number of courses that were registered for .



### Average Attendance rates - ABE 2007-2012

Year	Attendance Rate	Notes	Total mthly hrs / 9 mths	Avg. # students
2011-2012	67%	Adult 10 and 12 combined	605.32/9	14.5
2010-2011	66%	Adult 10 and 12 combined	591.43/9	11
2009-2010	58%	Adult 10 and 12 combined	1042.42/9	20
2008-2009	56%	Adult 10 stats only	505.92/9	12
2007-2008	66%	Adult 12 stats only	590/9	13

Attendance records were used to calculate the average attendance. Records for Adult 12 2008-2009 and Adult 10 2007-2008 were not found.



\*\* Attendance for 2007-2008 and 2008-2009 were averaged to calculate the benchmark of 61% (60.9%)

**Combined Attendance and Course Completion Rates**

